

# mix it up with colour!

If you've ever wondered which colours look best together, the Color Coach has been there to help. But what about Stampin' Up!'s In Colors? These six trendy colours expand your colour options and complement our exclusive colour families too! Use this chart to help you mix and match In Colors with Bold Brights, Earth Elements, Rich Regals, Soft Subtles, and Neutrals, and find the perfect colour combination every time!

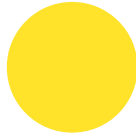
							
cool caribbean	certainly celery	real red	not quite navy	cool caribbean	pumpkin pie	old olive	real red
							
cool caribbean	green galore	apricot appeal	rose red	cool caribbean	marigold morning	old olive	cameo coral
							
cool caribbean	certainly celery	bashful blue	pretty in pink	cool caribbean	vintage violet	really rust	true thyme
							
cool caribbean	regal rose	so saffron	certainly celery	cool caribbean	vintage violet	ruby red	chocolate chip
							
cool caribbean	chocolate chip	sahara sand	old olive	cool caribbean	real red	old olive	tempting turquoise



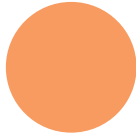
cool  
caribbean



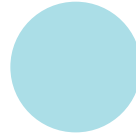
green  
galore



summer  
sun



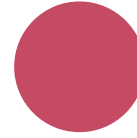
only  
orange



cool  
caribbean



true  
thyme



rose  
red



certainly  
celery



cool  
caribbean



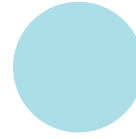
always  
artichoke



certainly  
celery



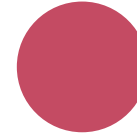
so  
saffron



cool  
caribbean



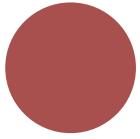
sage  
shadow



rose  
red



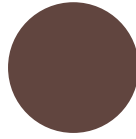
vintage  
violet



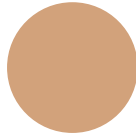
cranberry  
crisp



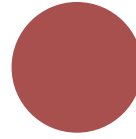
sage  
shadow



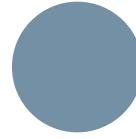
chocolate  
chip



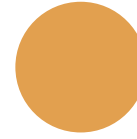
creamy  
caramel



cranberry  
crisp



buckaroo  
blue



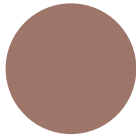
more  
mustard



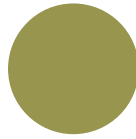
garden  
green



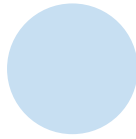
cranberry  
crisp



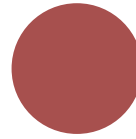
close to  
cocoa



old  
olive



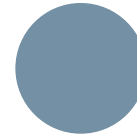
bashful  
blue



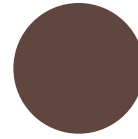
cranberry  
crisp



true  
thyme



buckaroo  
blue



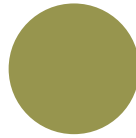
chocolate  
chip



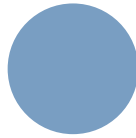
cranberry  
crisp



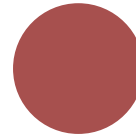
pumpkin  
pie



old  
olive



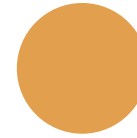
brocade  
blue



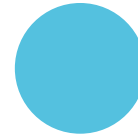
cranberry  
crisp



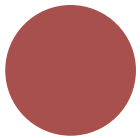
true  
thyme



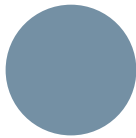
more  
mustard



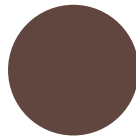
tempting  
turquoise



cranberry  
crisp



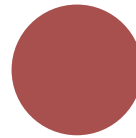
buckaroo  
blue



chocolate  
chip



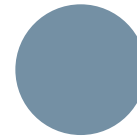
sahara  
sand



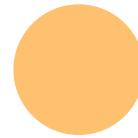
cranberry  
crisp



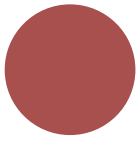
true  
thyme



buckaroo  
blue



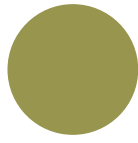
marigold  
morning



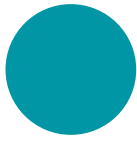
cranberry  
crisp



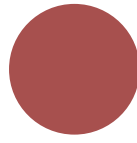
chocolate  
chip



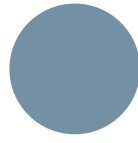
old  
olive



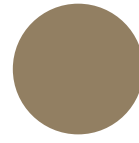
taken with  
teal



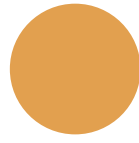
cranberry  
crisp



buckaroo  
blue



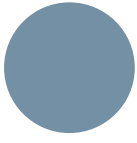
true  
thyme



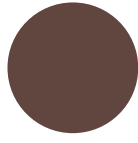
more  
mustard



true  
thyme



buckaroo  
blue



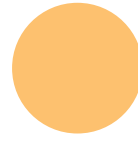
chocolate  
chip



pumpkin  
pie



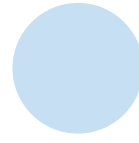
true  
thyme



marigold  
morning



barely  
banana



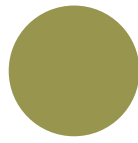
bashful  
blue



marigold  
morning



vintage  
violet



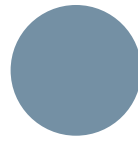
old  
olive



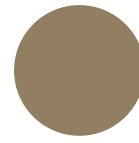
rose  
red



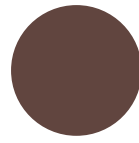
marigold  
morning



buckaroo  
blue



true  
thyme



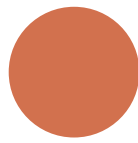
chocolate  
chip



marigold  
morning



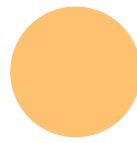
true  
thyme



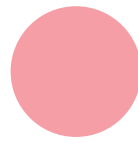
really  
rust



always  
artichoke



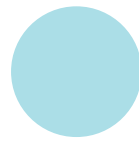
marigold  
morning



regal  
rose



old  
olive



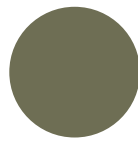
cool  
caribbean



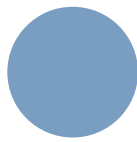
marigold  
morning



pumpkin  
pie



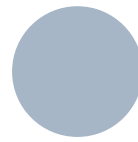
always  
artichoke



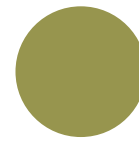
brocade  
blue



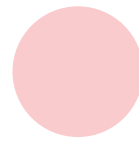
marigold  
morning



bordering  
blue



old  
olive



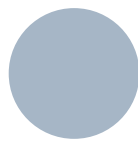
pretty in  
pink



marigold  
morning



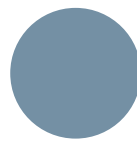
perfect  
plum



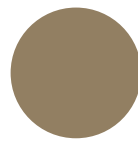
bordering  
blue



certainly  
celery



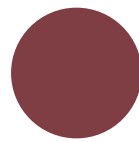
buckaroo  
blue



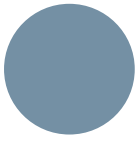
true  
thyme



sahara  
sand



bravo  
burgundy



buckaroo  
blue



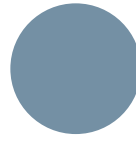
ruby  
red



mellow  
moss



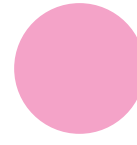
sahara  
sand



buckaroo  
blue



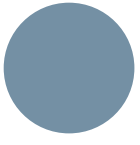
marigold  
morning



pixie  
pink



old  
olive



buckaroo  
blue



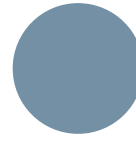
chocolate  
chip



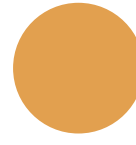
bravo  
burgundy



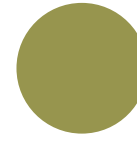
not quite  
navy



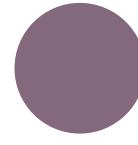
buckaroo  
blue



more  
mustard



old  
olive



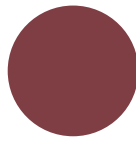
perfect  
plum



vintage  
violet



old  
olive



bravo  
burgundy



always  
artichoke



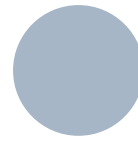
vintage  
violet



sage  
shadow



certainly  
celery



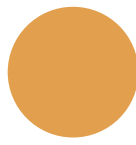
bordering  
blue



vintage  
violet



true  
thyme



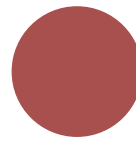
more  
mustard



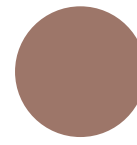
rose  
red



vintage  
violet



cranberry  
crisp



close to  
cocoa



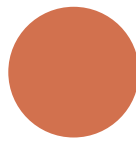
mellow  
moss



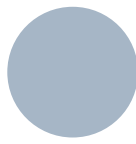
vintage  
violet



mellow  
moss



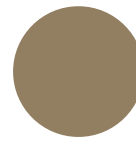
really  
rust



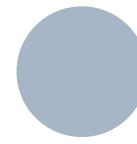
bordering  
blue



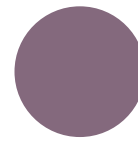
vintage  
violet



true  
thyme



bordering  
blue



perfect  
plum



vintage  
violet



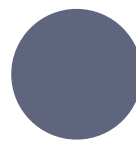
cranberry  
crisp



true  
thyme



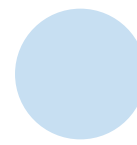
sage  
shadow



vintage  
violet



marigold  
morning



bashful  
blue



always  
artichoke